

XMS USER'S MANUAL

(Central Monitoring System)

Before installation

1. About XMS (Main features)

- **Floating & Docking for Multi Screen:**
- Max.256ch each for Live monitoring
Device sequence, local recording, screen editor
- Calendar Search/ Event Search:
Search by date, time/ Search by Event Log
- **Advanced event notification function**
Alarm spot, real time event log, event messenger
- **E-map Function (Map Link)**
- **Quick Search/ Hot spot: Instant search when event occur**
- PTZ Camera control
- **Auto schedule backup**

2. PC specification required

- CPU : Intel core2 duo or higher
- VGA : 256MB or higher
- LAN - 10/100Mbps Fast Ethernet
- Memory : DDR 2G or more
- HDD : Minimum 50MB free space in HDD
- OS : Windows XP, VISTA, Windows 7

3. Monitor setting

Click mouse right button on desktop and
Select properties.

Then go to 'Settings' to set optimal.

XMS is designed with the base of screen
resolution 1024 x 768. Other resolutions might
cause inconvenience for users.

To get best image quality, it is recommended
to set 32 bit in Color quality.



CONTENTS

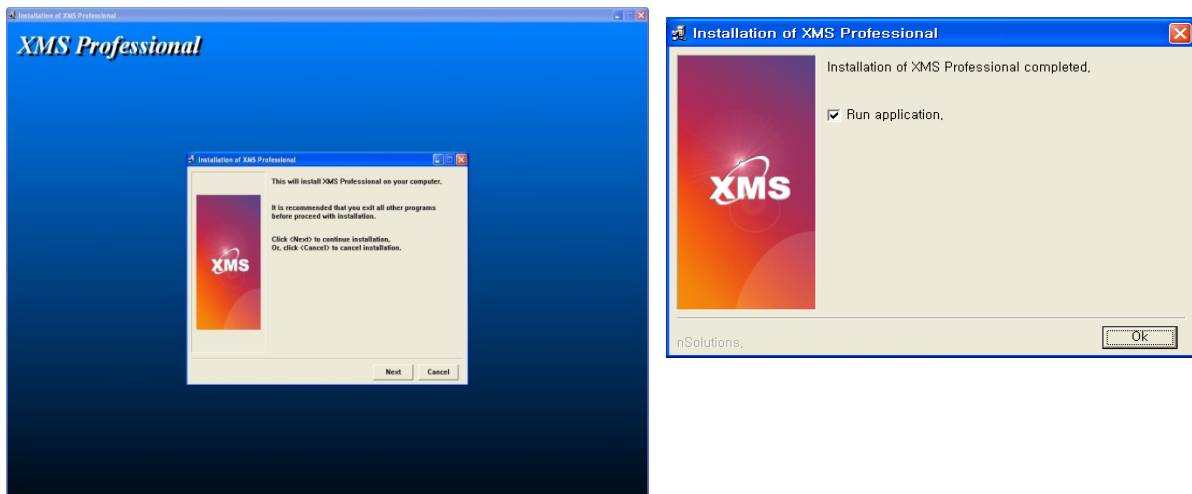
1. Installation	5
2. Main Menu	6
3. SETUP	8
3.1 DVR setup	8
3.1.1 DVR registration	8
3.1.2 Storage	9
3.2 Program setup	9
3.2.1 Log on	9
3.2.2 Display	10
3.2.3 Group settings	11
3.2.4 Event	18
3.2.5 User	20
3.2.6 Authority	20
3.2.7 System information	21
4. LIVE	22
4.1 Live Monitoring	22
4.2 On screen control	23
4.2.1 View Quick Search	23
4.2.2 PTZ	23
4.2.3 Device view	23
4.2.4 Record (Local record)	24
4.2.5 MIC/Speaker	24
4.2.6 Live Mode	25
4.3 A few tips	25
5. Search	26

5.1 Search by time & date	26
5.2 Backup	26
6. STATUS	28
7. Short Cut	28
7.1 Zoom	28
7.2 Alarm spot	28
7.3 Backup	29
7.4 Group Settings	30
7.5 Group Spot	30
8. Unique features of XMS	31
8.1 Floating	31
8.2 Docking	33

1. INSTALLATION

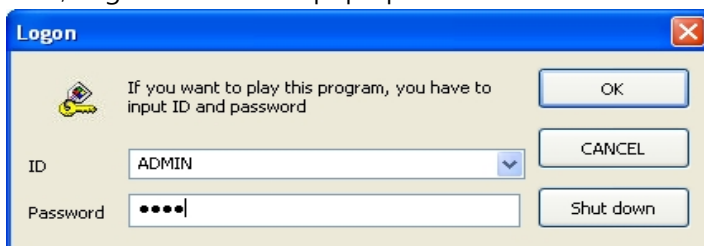


Execute "XMS_PRO.exe" by double click on above icon provided in CD and installation will be started.



After completing installation, check "Run application" and click "Ok"

Then, Logon window will pop up to start XMS. Enter ID and Password and click "OK"



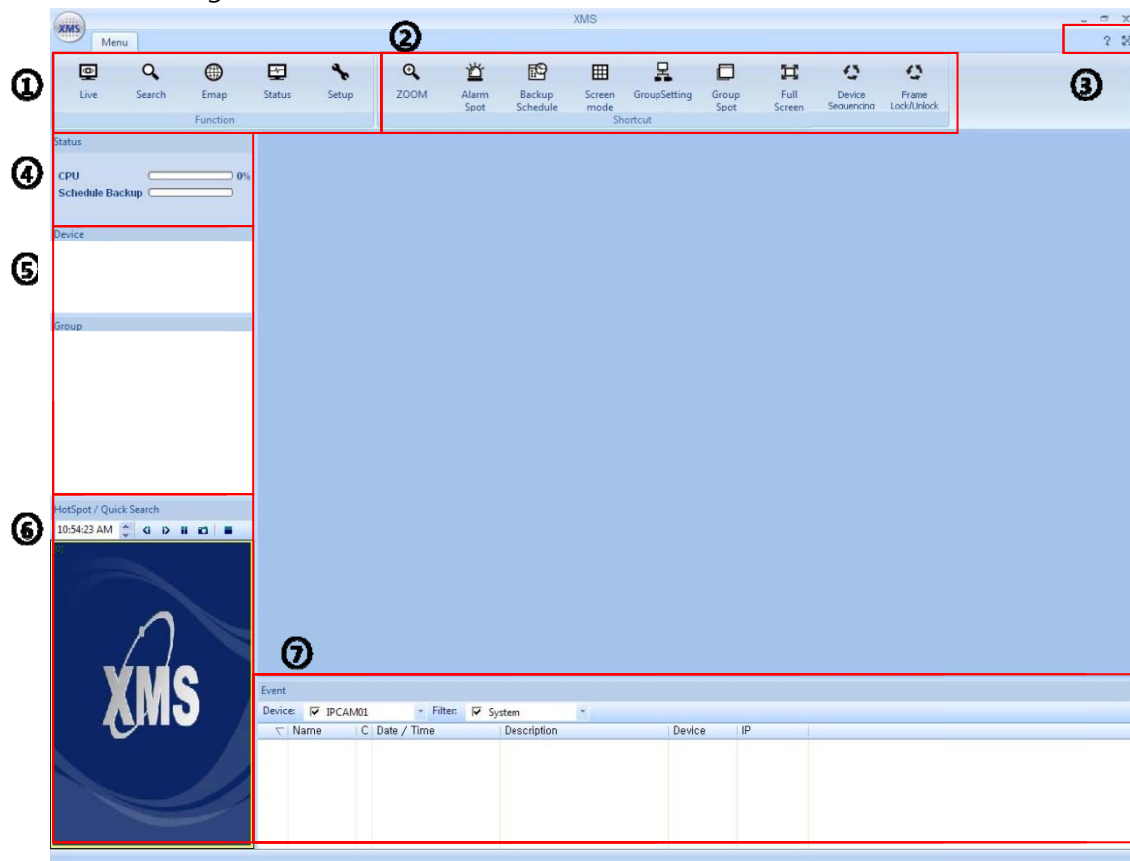
Default ID is ADMIN, MANAGER or USER. For initial setup, it is recommended to log on with ADMIN. Default password is 1234. (You can change default password in setup. See page 19 for details)



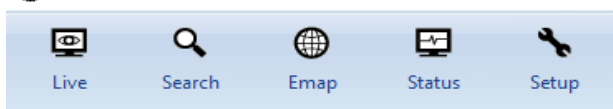
XMS icon will be generated on desktop after installation.

2. MAIN MENU

Basic screen arrangement

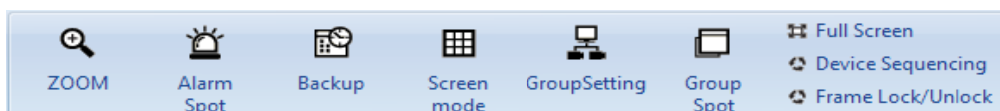


① Main menus



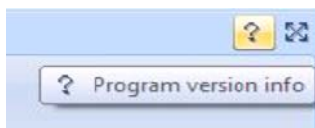
- Live : Live monitoring for selected DVR or group
- Search : Playback recorded data from DVR
- E-map : Live monitoring using registered map
- Status : Check DVR information (connection/HDD info, etc)
- Setup : XMS local setup or DVR remote setup, DVR register, User register, group setup

② Short cuts



- ZOOM : Digital ZOOM mode on Live & Search (Max. Zoom in up to 1024 x 768)
- Alarm Spot : Pop up alarm spot window
- Backup : Short cut to manual backup, schedule backup, backup status or backup log
- Screen mode : select various screen mode or edit screen mode
- GroupSetting : Short cut to Group setting
- Group Spot : Additional pop-up screen of 1 group
- Full Screen : Full screen mode button
- Device Sequencing : Live sequence of all registered DVRs
- Frame Lock/Unlock: Every frame in XMS is fixed/flexible (See page 10 for details)

③ Version information and Full Screen

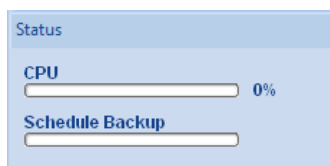


XMS Version information



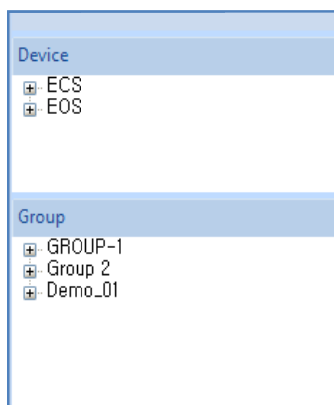
Full Screen

④ System Status

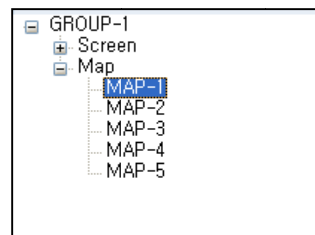
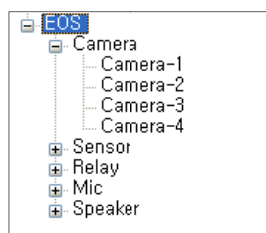


This part indicates how much CPU performance is occupied and backup status if XMS is doing task of schedule backup.

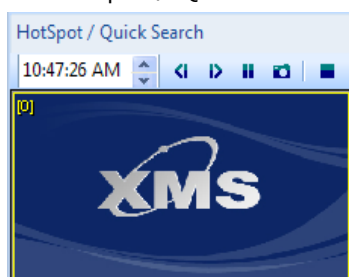
⑤ Device & Group



After you register devices or groups, you can check lists here. When you click on device or group, XMS connects to them and show live. Click + button of Device or Group to check details.



⑥ Hot Spot / Quick Search



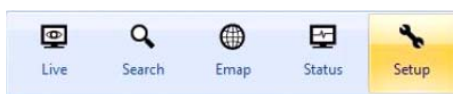
While you're in live mode, you can playback 1 channel without getting to Search menu.

⑦ Event (Real time event log)

Event						
Device: <input checked="" type="checkbox"/> ECS		Filter: <input checked="" type="checkbox"/> System				
Name	C	Date / Time	Description	Device	IP	

It can show real time event logs according to settings with name, camera no, date/time, description, device name and IP address.

3. SETUP

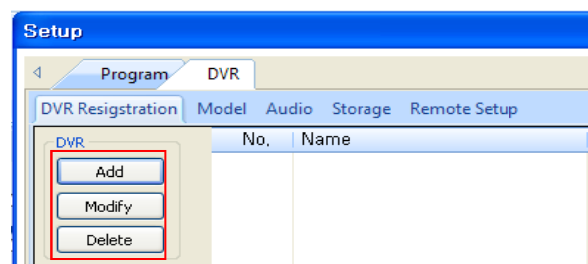


3-1. DVR SETUP

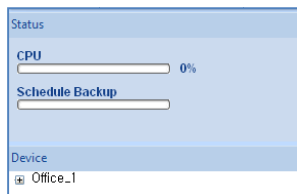
3-1-1. DVR Registration

Go to Setup >> DVR >> DVR Registration

To register new DVR, click



-Name : input name you wish.



You can see the name you made in Device list

-Model : select model name you wish to register.

- Address : DVR IP address or host name you registered in DDNS service.

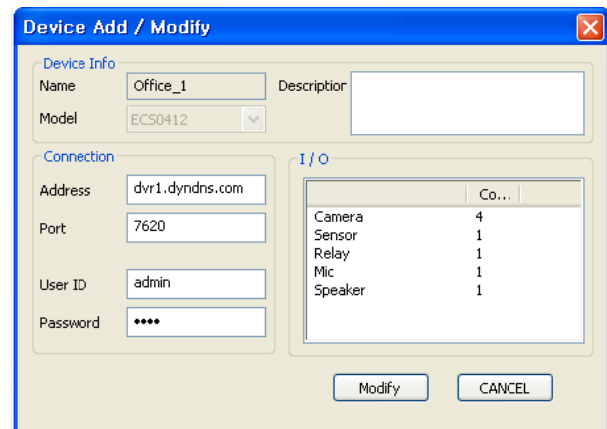
Ex> <http://192.168.1.100> → 192.168.1.100

<http://dvr1.dyndns.com> → dvr1.dyndns.com

- Port : Client port of DVR you set

- User ID : DVR ID

- Password : DVR password



If you don't know which model to select, Please check I/O and select model that fits your DVR.

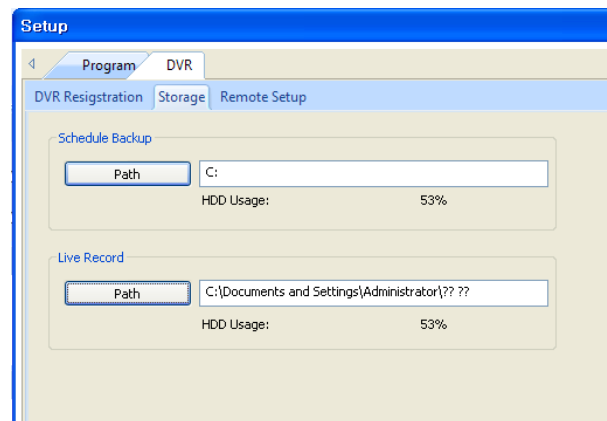
To modify or delete existing device, please select device name and click or

3-1-2. Storage

Setup >> DVR >> Storage

Designate path for Schedule Backup and Live Record by clicking path buttons.

- >Schedule Backup : Set up schedule for Automatic backup (See page 29 for details)
- >Live Record : In Live, you can save live images in designated path as AVI. (see page 23 for details)



3-2. PROGRAM SETUP (setup for XMS software)



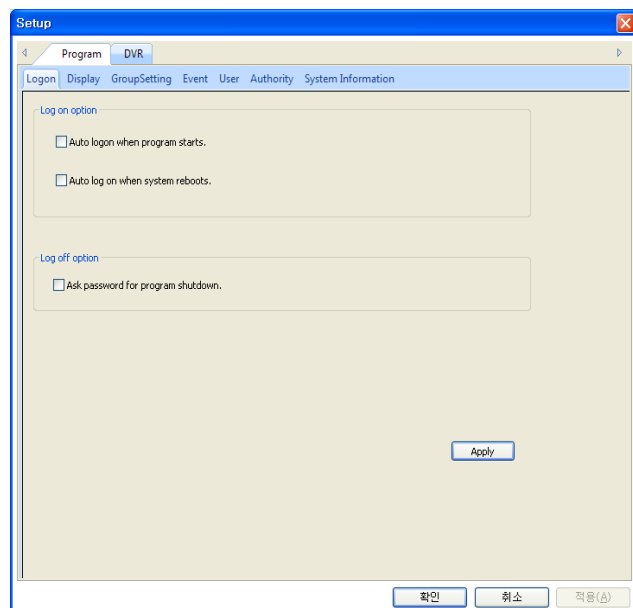
3-2-1. Log on

Setup >> Program >> Logon

-Log on option

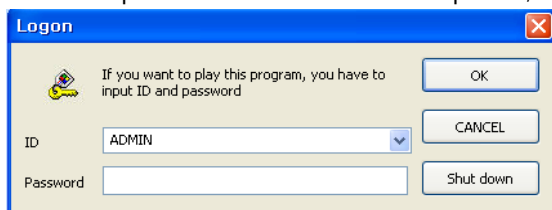
Auto logon when program starts
→XMS starts automatically without having to input ID & password

Auto logon when system reboots
→XMS starts automatically without having to input ID & PW when PC reboots.



-Log off option

Ask ID & password for shut down. Input ID, Password and click "Shut down"



3-2-2. Display

Setup >> Program >> Display

- OSD : indication of device name, Camera name, Time ON/OFF, color
- Live Record : Indication of Live Record icon.

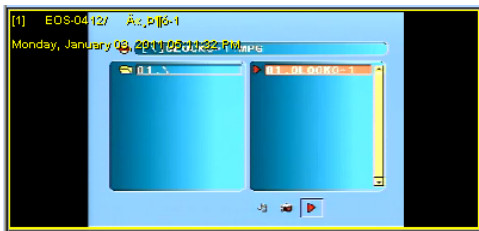
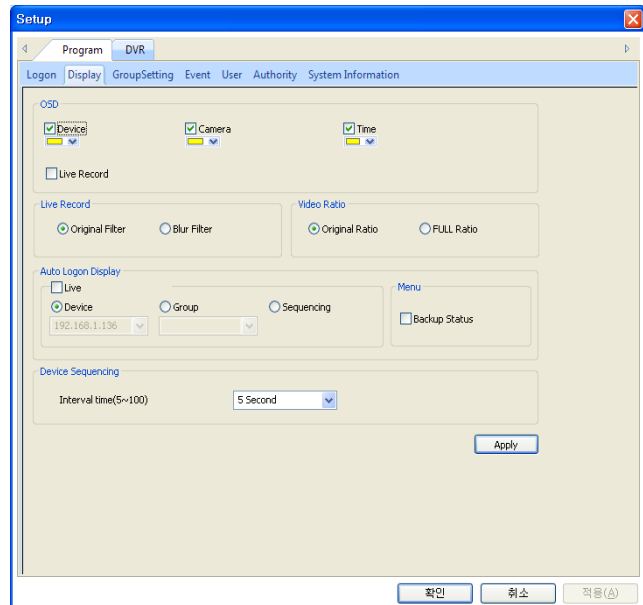
>Original Filter & Blur Filter

Original image & Blurred edge image when images gets larger.

- Video Ratio

>Original Ratio : maintain original ratio (3:4 or 16:9) even if screen ratio changes

>Full Ratio : Video image gets full in Screen ratio when screen ratio changes.

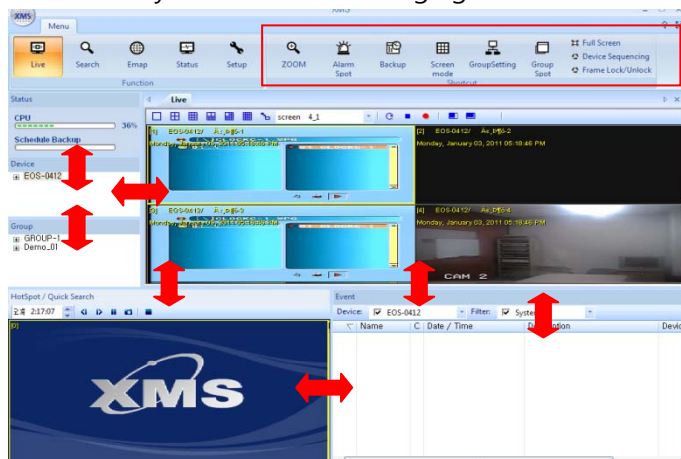


<Original ratio 4:3>



<Full Ratio 13:6>

* XMS is very flexible about arranging screens and functions by operator's choice.



Place mouse cursor on red arrows then you can move the border of each function. If you activate "Frame Lock", every frame in XMS is fixed and you can't move the border of each function.

- Auto Logon Display

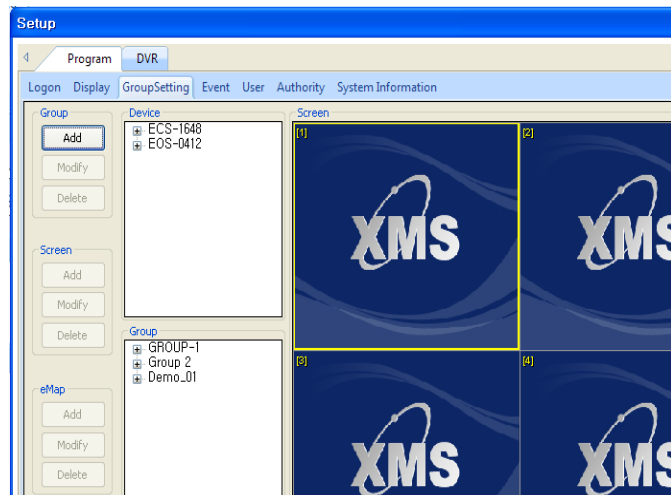
In case XMS is automatically logged on by your setup in Logon option, XMS can connect to Device, Group or conduct Sequencing automatically according to this settings.

- Device Sequencing : Adjust interval time for registered device sequence (5~100 seconds)
- Backup status : Indication of backup progress when making backup on XMS,

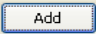
3-2-3. Group Setting

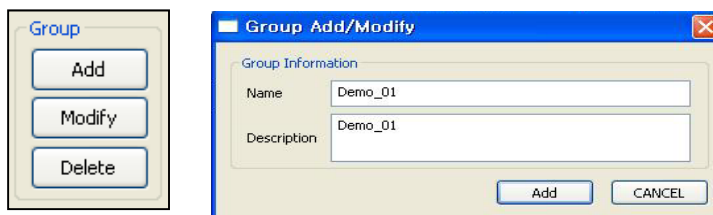
Setup >> Program >> Group setting

- Group
Add/Modify/Delete group
- Screen
Add/Modify/Delete screen for group
- E-map
Add/Modify/Delete map for group



3-2-3-1. Registering group

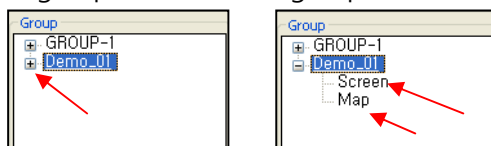
Click  to generate new group. Then, input name of group and description.




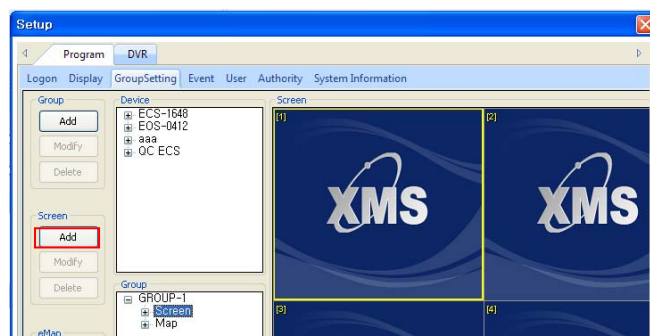
To modify or delete existing group, select group name and click modify or delete.

3-2-3-2. Registering screen type for group

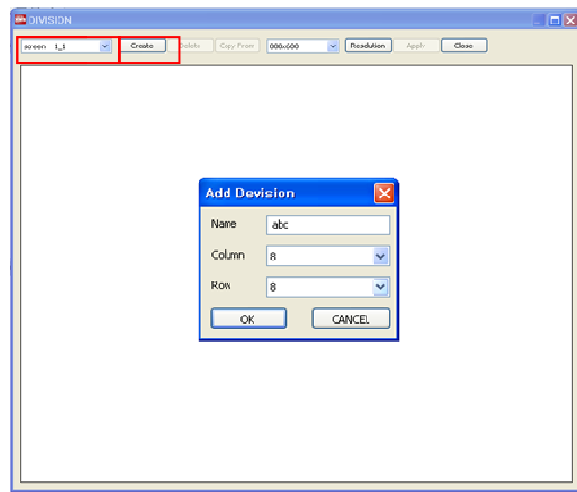
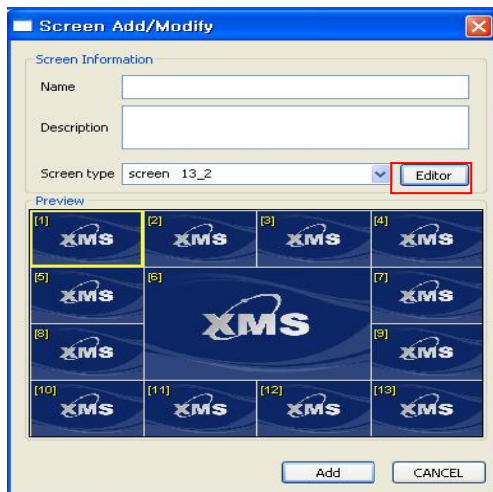
In group list, click + of group. Then, Screen and Map will be shown.



Select Screen and click .

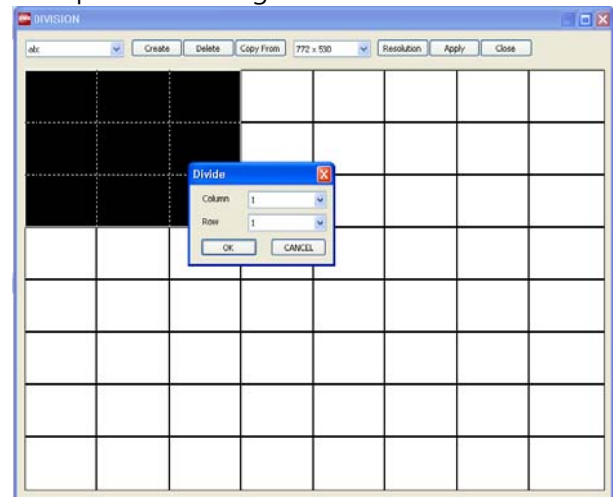
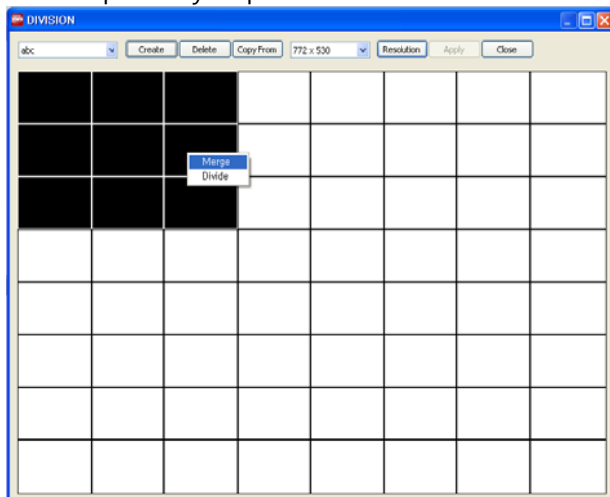


On Screen Add/Modify window pops up then input name and description.
 Select Screen type (1~256ch mode) or make a new screen type using Editor.
 Click "Editor" to create a new screen type then DIVISION window pops up as below.




In Editor mode, you can register your own screen. If you want to modify existing screen type, select one of screen types on list. You can modify it using "Merge & Divide"
 If you want to create new screen types, click "Create" then input name, column (number) and row (number) as you wish. After new screen type appears, you may also modify it using "Merge & Divide"

<Example> If you put 8 for column and 8 for row, 8 X 8 split division is generated as below



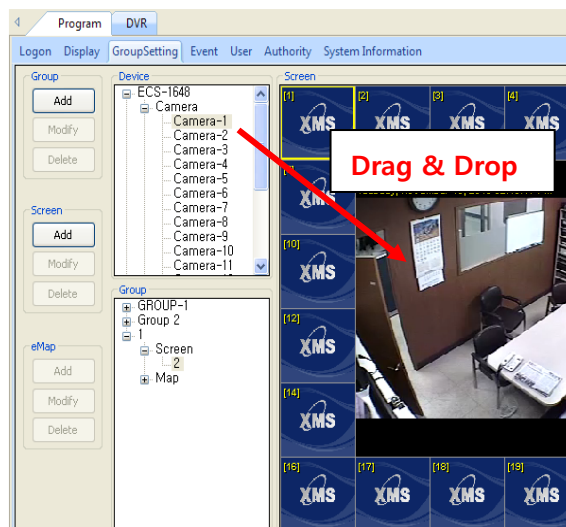
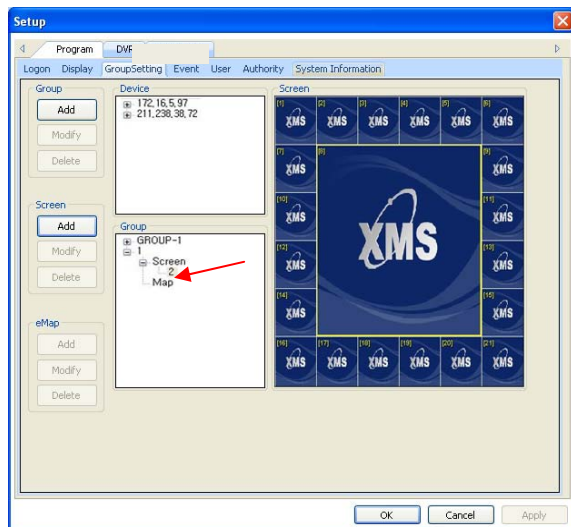
Drag as above in black and mouse right click.
 Click "Merge" to make 9 cells into 1 cell.

If you click divide, you can divide merged cell into several cells

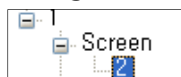
Newly created screen division will be placed on screen division list if you click 

If you want to delete certain screen type, select screen type you wish to delete and click 

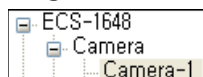
Once you finish registering screen type for group, you can register cameras from devices to group.



For camera registration into group,
Click generated screen mode

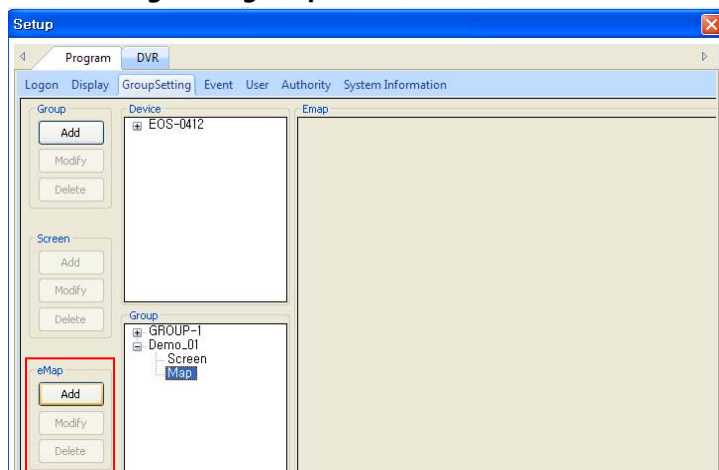


Select cameras from devices
Drag from camera & drop in screen



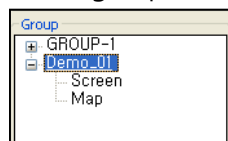
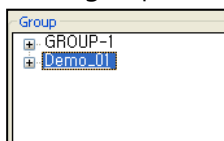
For audio, sensor, MIC and speakers, you can also drag it from device and drop it into group.

3-2-3-3. Registering map



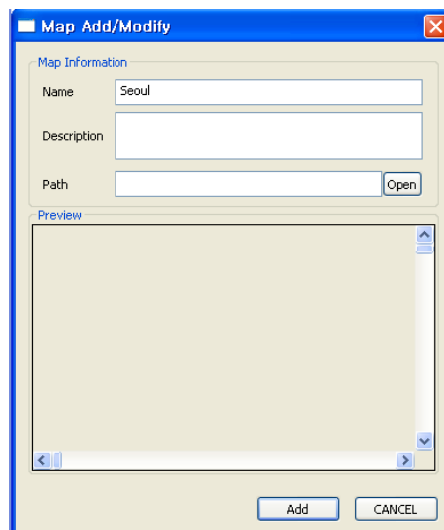
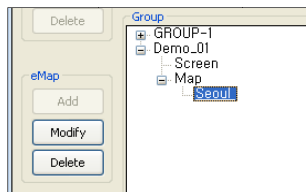
In order to use E-map, you have to register maps in Group Setting.

Select group and click + of group then select Map and click in eMap.



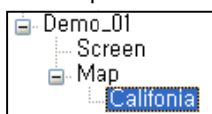
Only *.bmp or *.jpg format can be registered for Map. Input name and description of Map designate path of map we wish to register. Through preview, you can check the map before Adding it.

Click + of Map and select existing map you wish to modify or delete. Then, click or

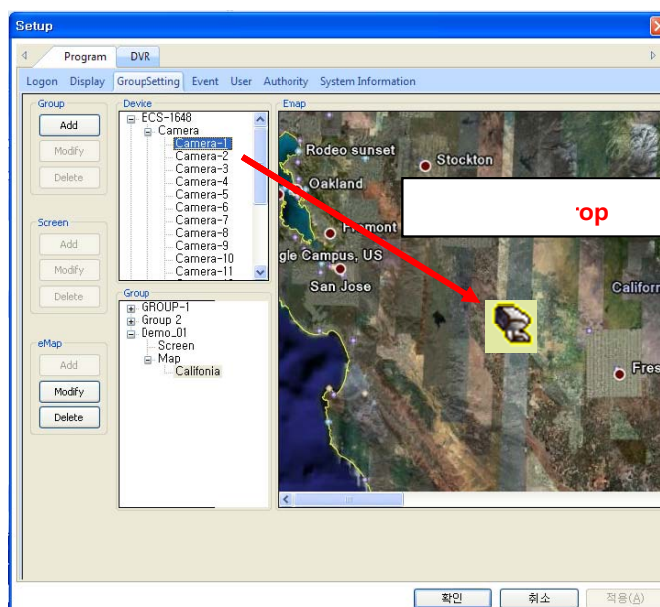


3-2-3-3-4. Placing camera on map

After adding map, click group >> Map >> Map name



Then, select device >> camera >> camera no.



Drag camera no. and drop it on map
Camera icon will be generated on map.

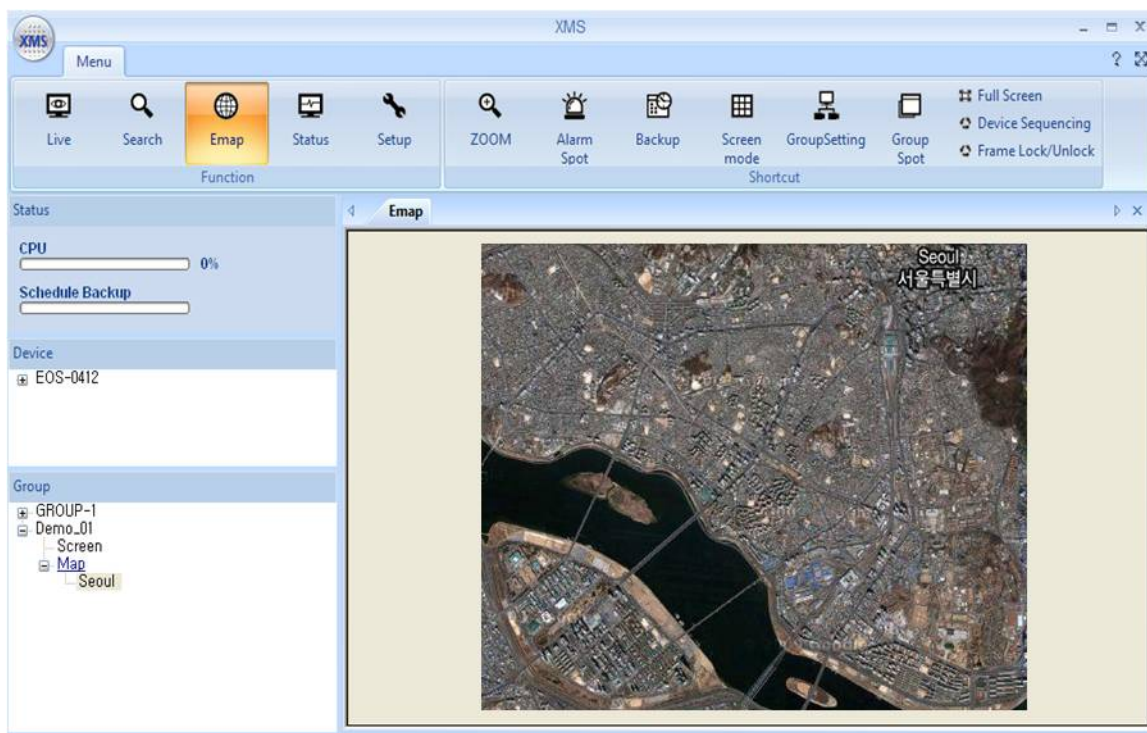
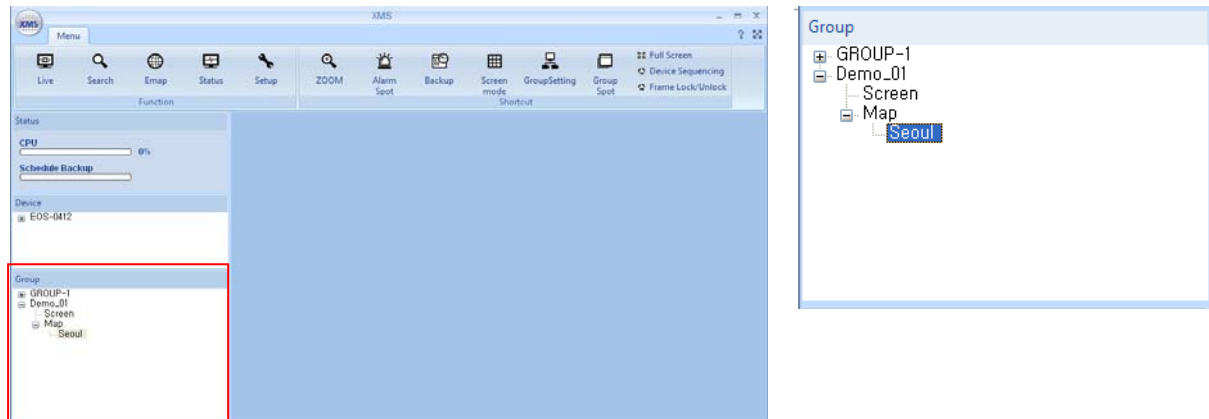
You can place sensors, relays, MIC and speakers on map as well the same way.



Camera Sensor Relay MIC Speaker
These icons will be located on map after you place them.

3-2-3-3-5. How to use E-map

After registering map and placing camera into map, move to Group in main screen.
Then click group name and click map you wish to display.

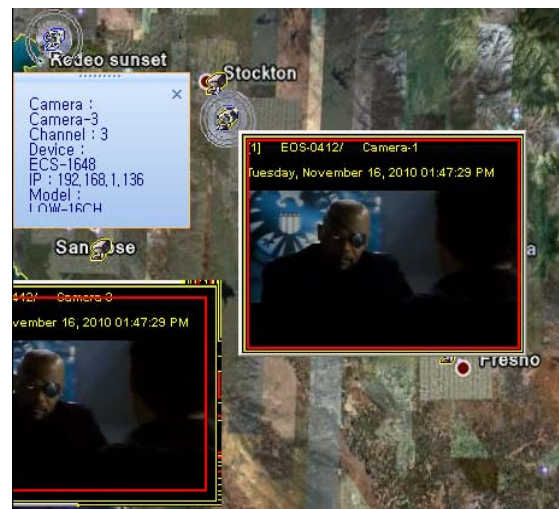


Find camera icons on map you registered in Groupsettings.



Click mouse right button on camera icon.

- Info : camera name/no, device name, IP and model name will be indicated
- Window : live image of camera will be displayed
- Emap Device View : device live screen that camera belongs to will pop up
- Emap Group View : group live screen that camera belongs to will pop up



3-2-3-3-6. Link for multiple maps

Several maps can be linked in E-map function. It makes user monitor from Nation or province to street or specific building.

Register several maps to be linked together.

Click one map to see preview of map.



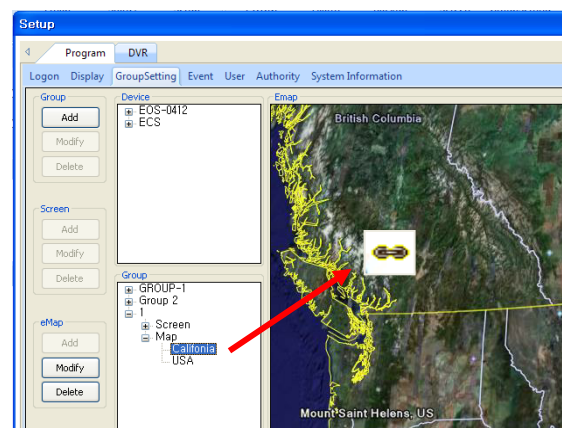
Then click another map



and drag onto map.

Link icon will be generated as in the picture.

Then the 2 maps are linked and you can move to the other map by clicking the icon.



In the same way, you can link several maps according to your necessity

<Example of E-map link>

Using link icons, 4 maps are all connected from U.K map down to specific building.



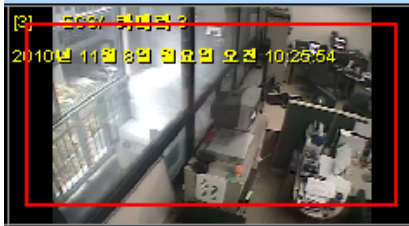
3-2-4. EVENT

You can configure event notification functions in this setup.



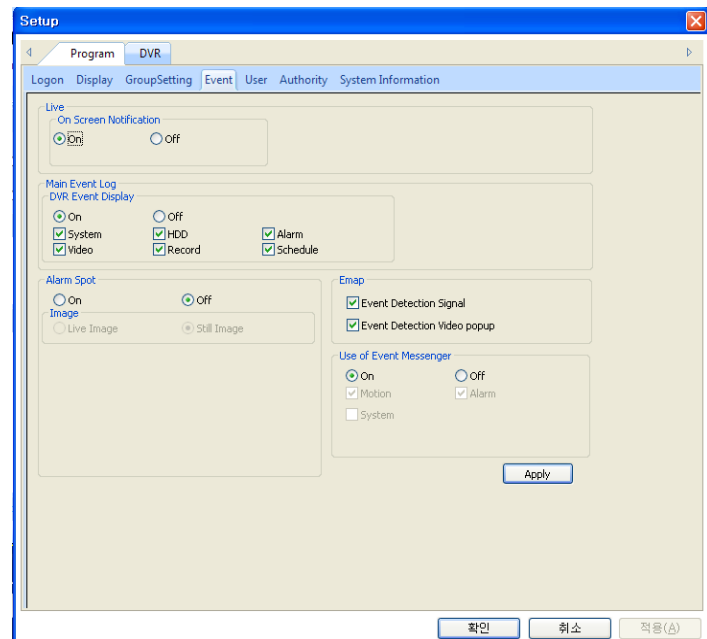
Setup → Program → Event

-Live on screen notification



Showing red box movement

In case of motion, sensor in, video loss.



-Main Event Log - DVR Event Display

Event						
Device: <input checked="" type="checkbox"/> DEMO		Filter: <input checked="" type="checkbox"/> System				
Name	C	Date / Time	Description	Device	IP	
1., Alarm	9	8/26/2009 11:55:42 AM	Alarm Out Start :: CH 9	DEMO	211.238.38.72	
1., Video	9	8/26/2009 11:55:42 AM	Motion Detection On :: CH 9	DEMO	211.238.38.72	
1., Alarm	8	8/26/2009 11:55:42 AM	Alarm Out Start :: CH 8	DEMO	211.238.38.72	
1., Video	8	8/26/2009 11:55:42 AM	Motion Detection On :: CH 8	DEMO	211.238.38.72	
1., Alarm	7	8/26/2009 11:55:42 AM	Alarm Out Start :: CH 7	DEMO	211.238.38.72	
1., Video	7	8/26/2009 11:55:42 AM	Motion Detection On :: CH 7	DEMO	211.238.38.72	
1., Alarm	7	8/26/2009 11:55:35 AM	Alarm Out Stop :: CH 7	DEMO	211.238.38.72	

Select device and events to see event log in real time. Information such as event type, camera name, camera number, description, device name and IP will be provided in this function.

-Event types (You can check event types that you want to indicate in this function in Filter)
Motion, Alarm in, Video Loss

If you double click on any of event, XMS shows recorded image of the time event occurred.

Event						
Device: <input checked="" type="checkbox"/> DEMO		Filter: <input checked="" type="checkbox"/> System				
Name	C	Date / Time	Description	Device	IP	
1., Alarm	9	8/26/2009 11:55:42 AM	Alarm Out Start :: CH 9	DEMO	211.238.38.72	
1., Video	9	8/26/2009 11:55:42 AM	Motion Detection On :: CH 9	DEMO	211.238.38.72	
1., Alarm	8	8/26/2009 11:55:42 AM	Alarm Out Start :: CH 8	DEMO	211.238.38.72	
1., Video	8	8/26/2009 11:55:42 AM	Motion Detection On :: CH 8	DEMO	211.238.38.72	
1., Alarm	7	8/26/2009 11:55:42 AM	Alarm Out Start :: CH 7	DEMO	211.238.38.72	
1., Video	7	8/26/2009 11:55:42 AM	Motion Detection On :: CH 7	DEMO	211.238.38.72	
1., Alarm	7	8/26/2009 11:55:35 AM	Alarm Out Stop :: CH 7	DEMO	211.238.38.72	



-Alarm Spot

Select on/off for alarm spot.

If it is on, alarm spot window will pop up, when events occur.

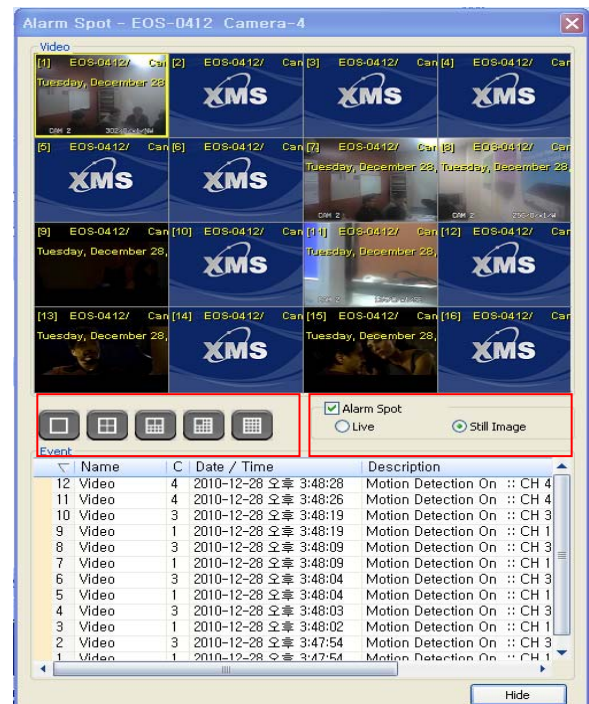
You can choose live or still shot for this pop-up.

Event logs can be found and you can

Select various screen division for this spot.

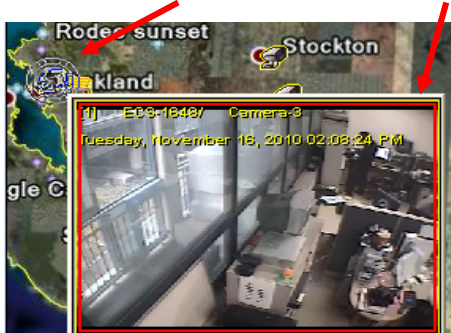
If alarm spot is activated, it pops up in the middle

Live screen but you can move anywhere in screen even in another monitor (If using multi monitor)

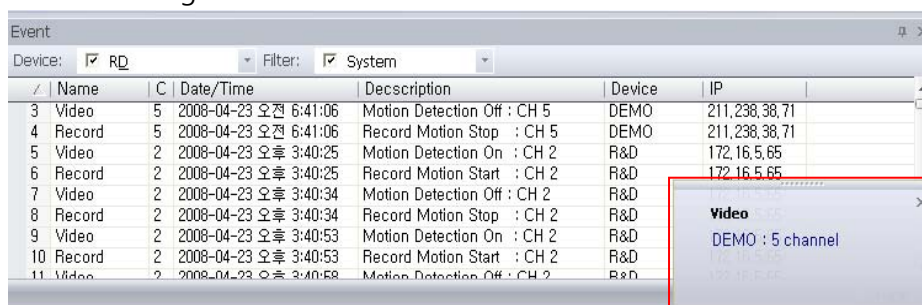


-Emap

Select event notification on/off & video popup on E-map function.



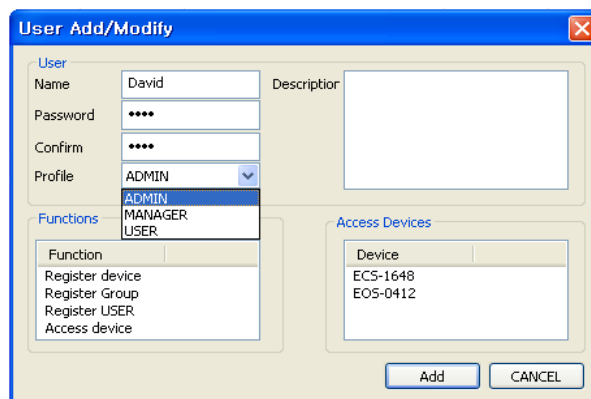
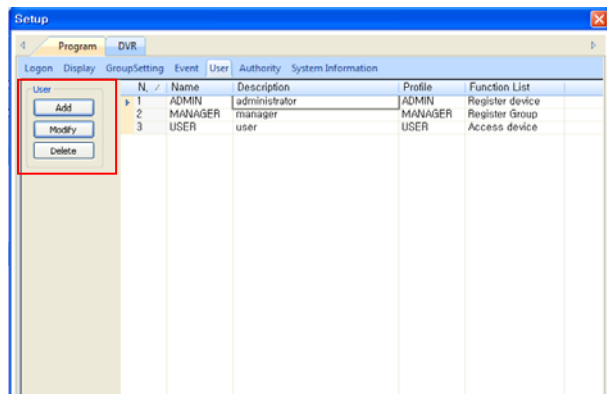
-Event messenger



Select on/off and check event item among motion, alarm and system. Event messenger box will pop-up in the right bottom of main screen with alert buzzer in case events occur.

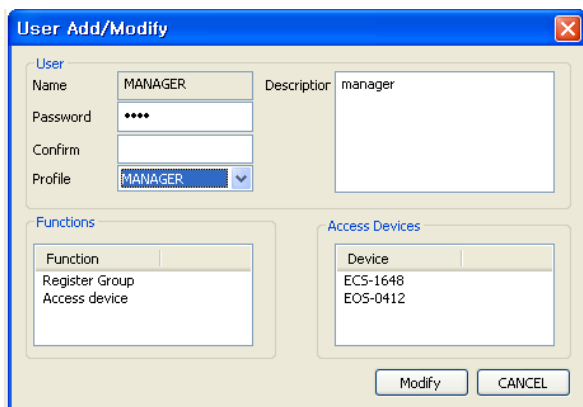
3-2-5. User (XMS user setup)

Setup >> Program >> User



You can add, modify or delete user of XMS in this function.

Click **Add** to create new user. Input name, password and select profile (user group) of new user. You can check functions (authorities) of the new user and accessible device list.

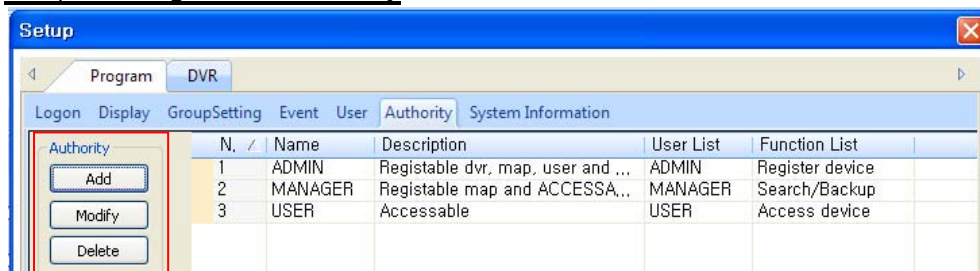


Click **Modify** to change setup of existing users. You can modify password, description or profile of user.

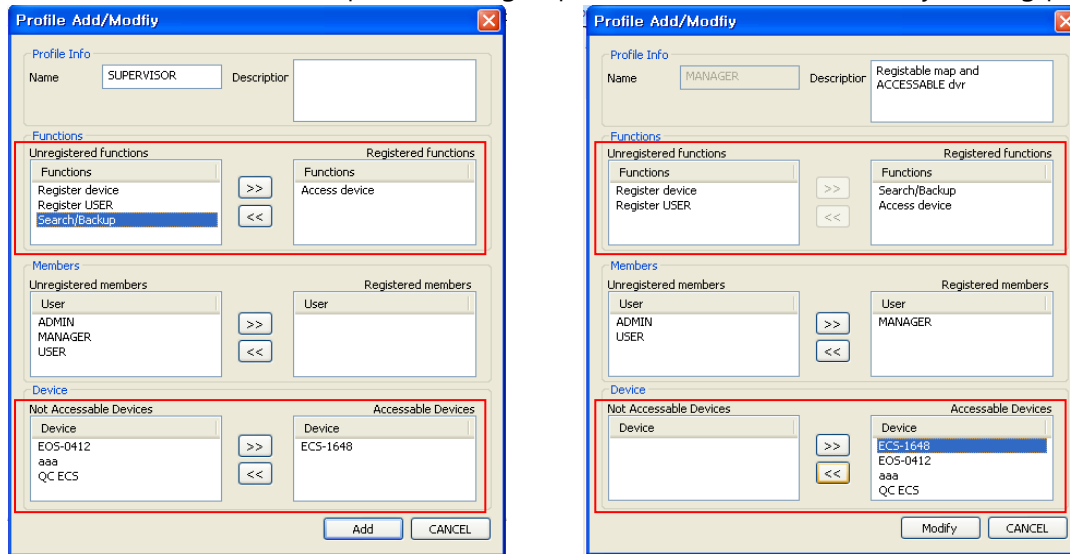
Click **Delete** to remove existing users from the list.

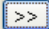
3-2-6. Authority (XMS user authority)

Setup >> Program >> Authority



Click  to create new profile (user group) or click  to modify existing profile.




<Creating new profile> input name and description. You can select (register) functions and accessible devices. First click one of functions or devices, click  to register for new profile.

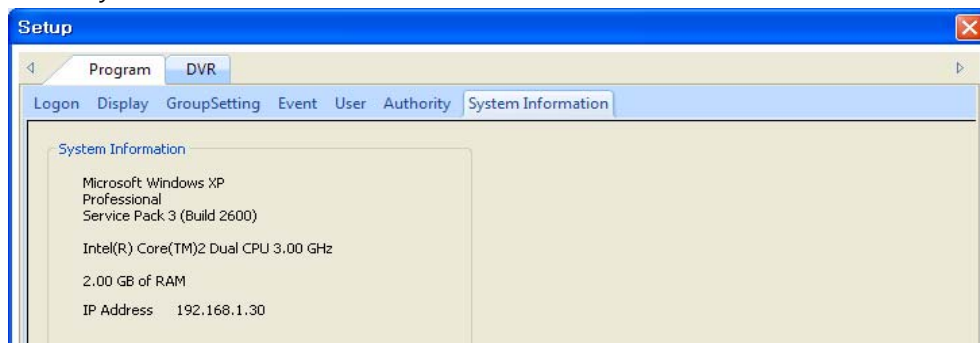
Unregistered functions can be done by this user and only list of accessible devices can be connected by this user in XMS.

<Modifying existing profile> you can modify description, functions and accessible devices using .

Members remain default (cannot be changed)

Click  to remove existing profile off the list.

3-2-7. System information

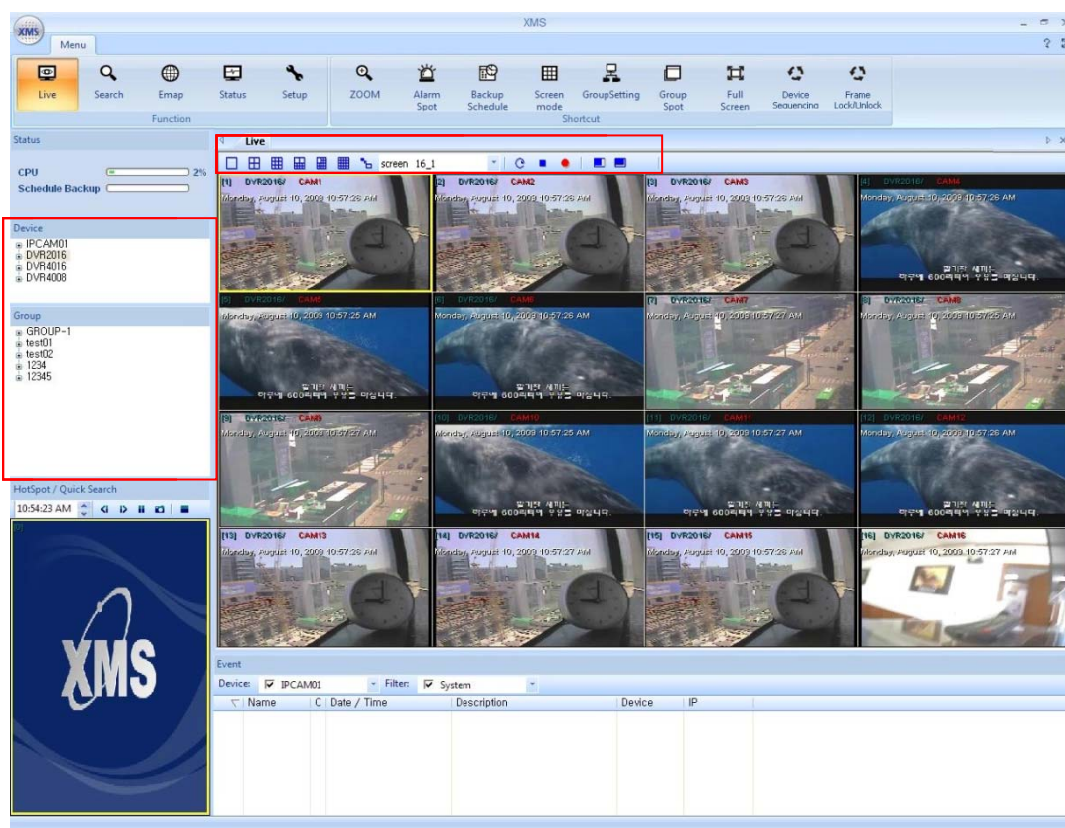


You can check system information of PC that XMS is installed on.

OS, hardware (CPU, RAM) and IP address will be indicated.

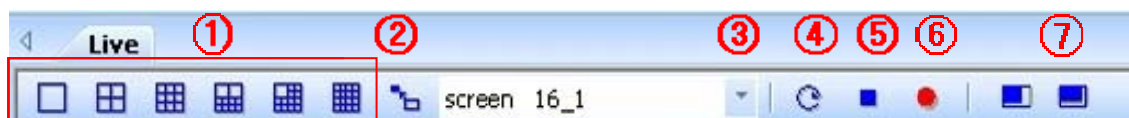
4. LIVE

4-1. Live monitoring



You can see registered DVR list in Device and generated group in Group.

Click device or group and you can see live streaming.

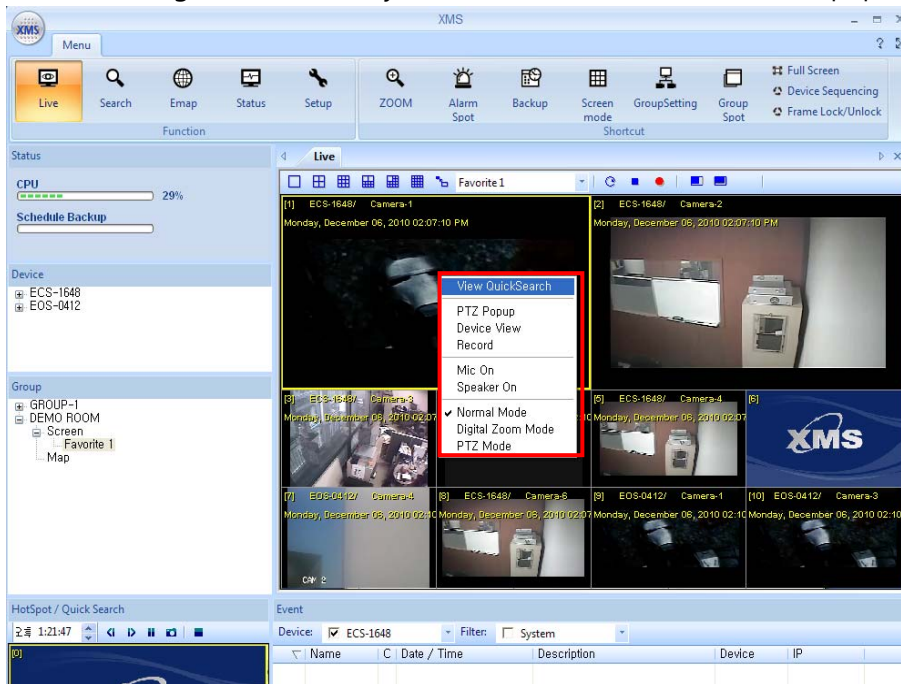


- ① Screen mode icons : Select screen mode as you wish
- ② Retrieving screen mode : after modifying screen, screen will be back to initial mode.
- ③ Screen mode selection : screen 1_1 ~ screen 256_1
- ④ Device sequence : Sequence start by each registered device (Dwell time 5~100 sec)
- ⑤ Stop : stop live connection

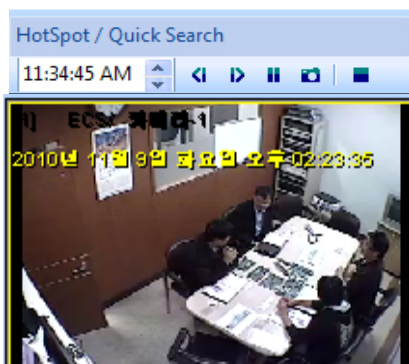
- ⑥ Local recording : save live stream in designated path. (AVI)
- ⑦ PAL / NTSC optimizing : Select one of icons according to video signal type.

4-2. On-screen-control

Click mouse right button on any channel then on-screen-menu will pop up.



4-2-1. View Quick search – 1 specific channel playback on quick search window.



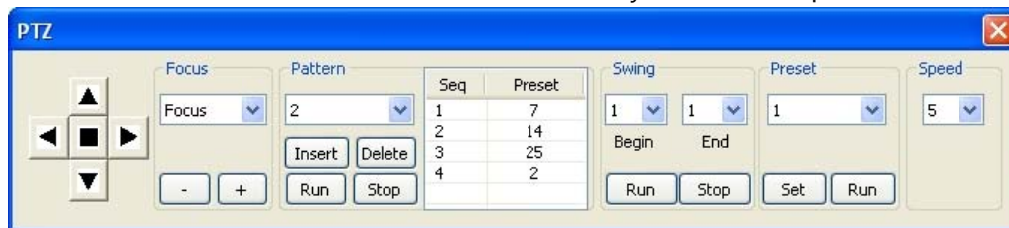
Click "forward" or "backward" in Quick search menu. Then, quick search starts before 120 seconds at the time and continue for 300 seconds in total

Click "pause" and adjust time for quick search and click "forward" or "backward" for display of recorded image. Then quick search start from that time for 300 seconds

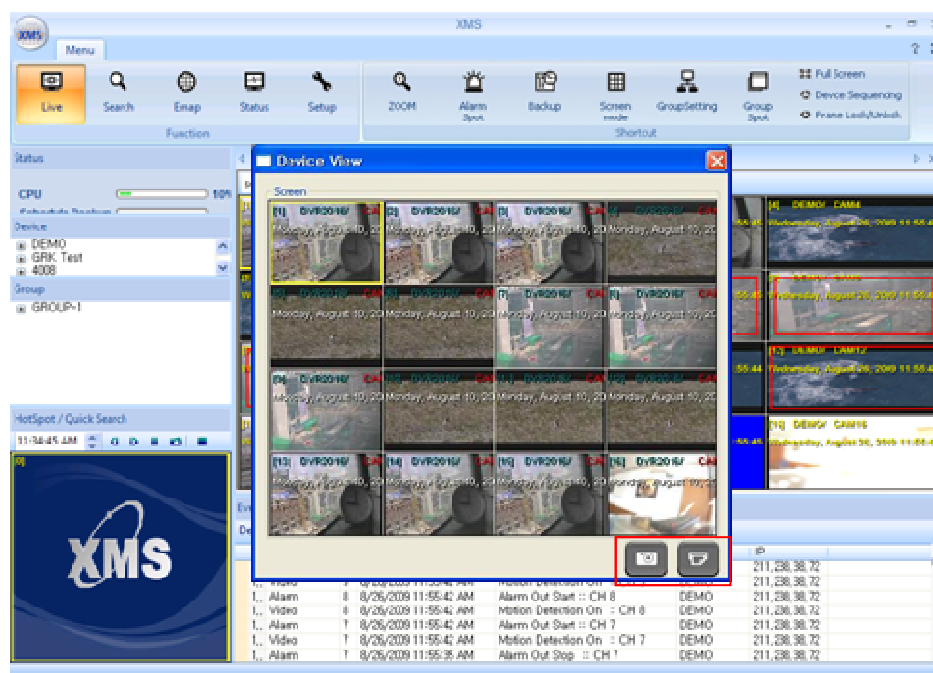
During the display of quick search, click "forward" or "backward" multi times and the display forward , back forward up to 4 times faster. (Quick search can be run while live displays simultaneously)

4-2-2. PTZ – for PTZ control, green margin

➔ Move the scroll of mouse for zoom and any direction for pan/tilt.



4-2-3. Device view - In case of displaying group (multiple DVRs), you can make 1 device pop up. EX> You created a group from 4 devices. In the group, channel 4 is from DVR A. Position mouse cursor on channel 4, click mouse right button and select device view. Then you will see live display of DVR A on additional window pop-up. (Device view window pops up in the middle of main screen but it can be moved anywhere on screen or even to another monitor (If using multiple monitors))



Snap shot and print function are supported on this pop-up

4-2-4. Record (Local record) - if you need to save live video streaming in XMS server (PC where XMS was installed on) while you watch it, click this. AVI data will be saved in designed path.

4-2-5. MIC ON/SPEAKER ON – MIC ON/SPEAKER ON

4-2-6. MODE for each channel



Normal – for normal monitoring, yellow margin

Digital Zoom – for digital zoom function, blue margin

PTZ – for PTZ control, green margin

Select a channel then click mouse scroll. Frame color changes into blue for digital zoom mode. Click again in blue frame. Frame color changes into green for PTZ mode.



4-3. A few tips <LIVE>

Changing camera locations on screen

Click "A" channel on Live

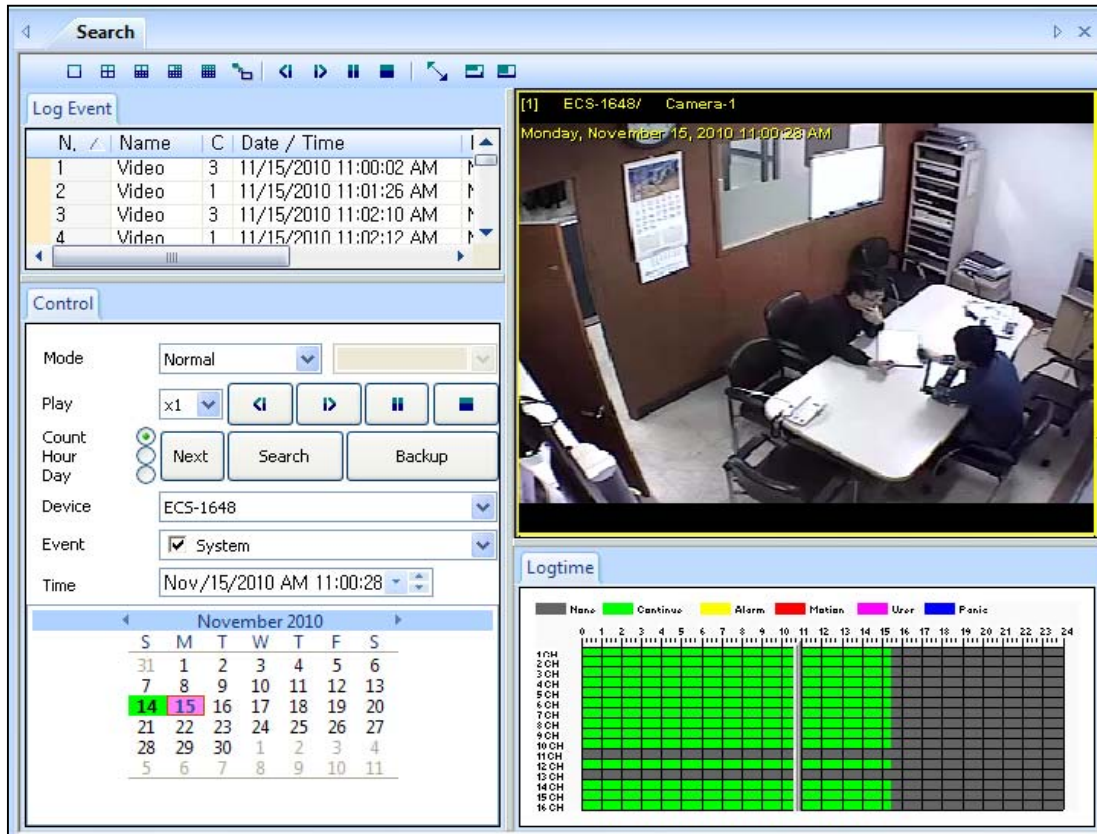
Then drag it & drop to "B" channel

The locations of "A" channel and "B" channel will be exchanged

To retrieve original camera locations, click the icon below,



5. SEARCH



5-1. Search by calendar & Event

Select device (You can search only by one device at a time) and click search button.

Search

It shows recorded data in Logtime (Time bar) by channel and if there is log events, shows log events in Log Event. Move the time bar and click to see playback.

Log events can be displayed by count (up to 100 logs), Hour (logs within 1 hour), day (logs within day). Max. 100 logs can be shown in Log Event. If the number of logs is more than 100, click to see next page of logs

If you double click log in Log Event, playback starts. You can adjust the speed (up to x 32) through "play" button.

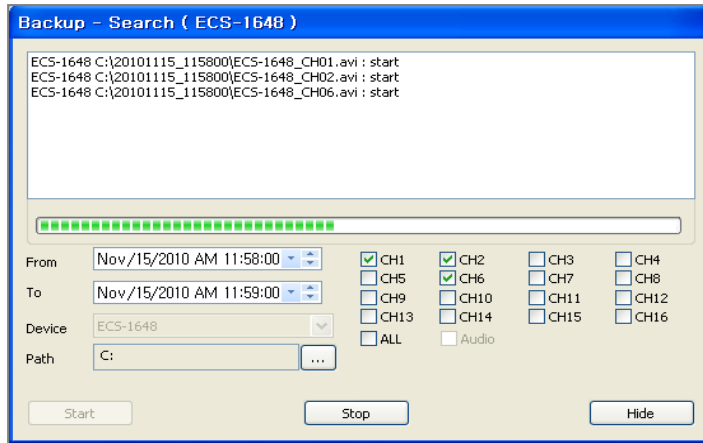
5-2. Backup

Click

Backup

Select the device & CH for backup

You can hide backup status and do other tasks such as watching "LIVE", "SEARCH" or more.



After completion of backup, folder like the below appears in the path.



Year/ Month/Date_ Hour/Minutes/Second

(Inside folder, you can check AVI format of backup file)

6. STATUS

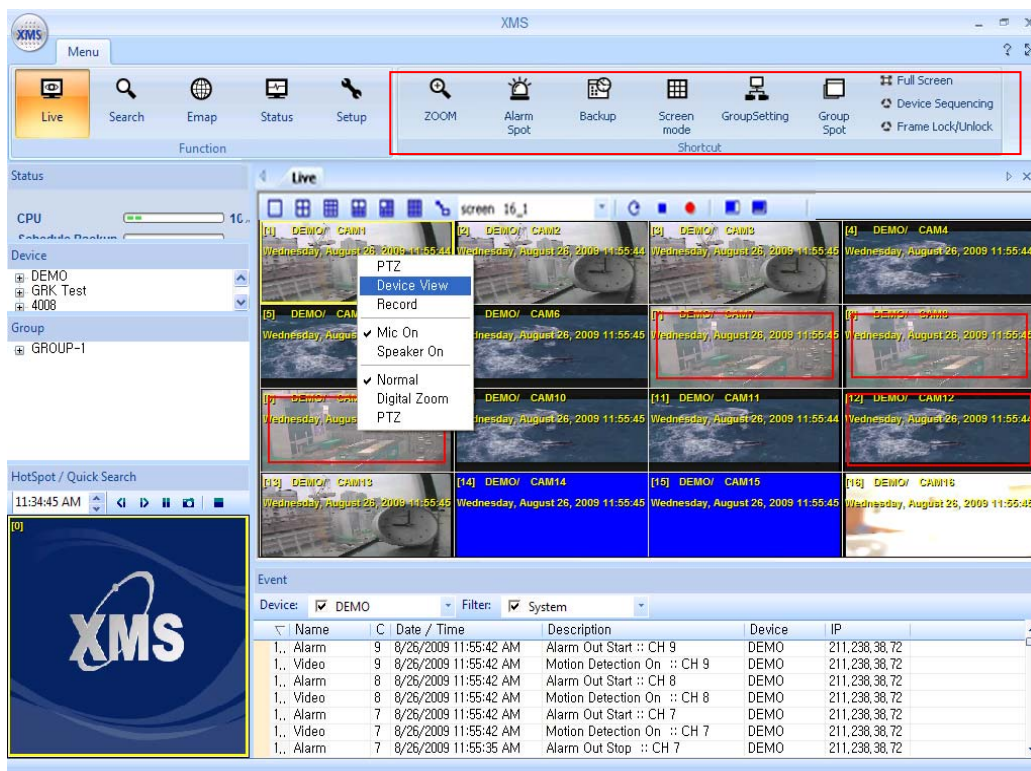
Connection & HDD info of all the registered devices can be checked via STATUS



Click "Start" for device check-up and click "Stop" to close this function

Checking STATUS might make XMS perform slowly. Therefore, it is recommended to stop it right after checking STATUS

7. SHORT CUT



7-1. ZOOM – Selected channel moves to digital zoom mode.

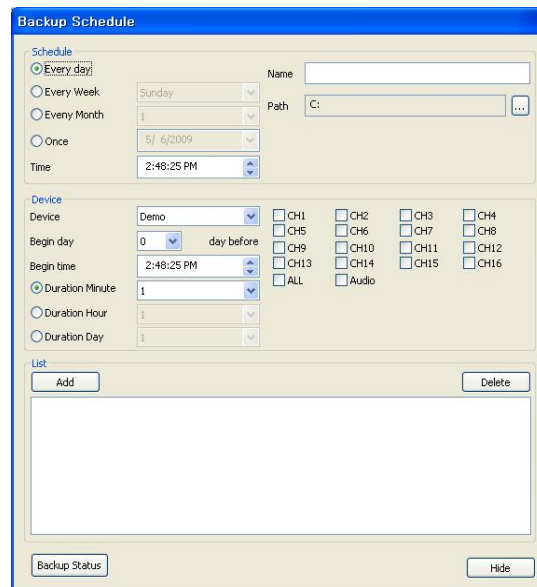
7-2. Alarm spot – Alarm spot will pop-up (for activation of alarm spot, go to SETUP → EVENT → ALARM SPOT ON/OFF)

7-3. BACKUP



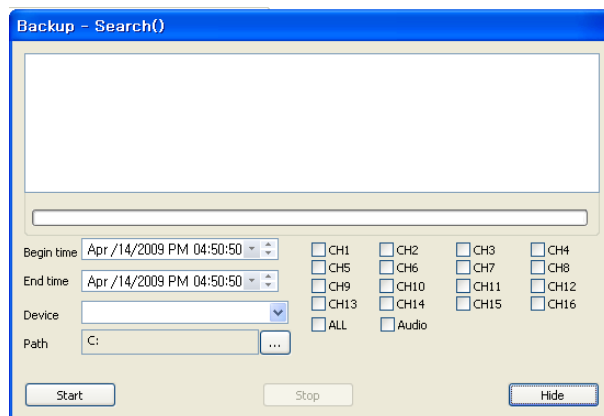
7-3-1. Schedule backup

- 1) Select frequency of schedule backup
-Every day, week, month or once
- 2) Select time to begin backup
- 3) Select device for auto backup
- 4) Select begin day, time, channels
- 5) Adjust duration of backup
-Minute, hour and day
- 6) Click Add then it will be on the list



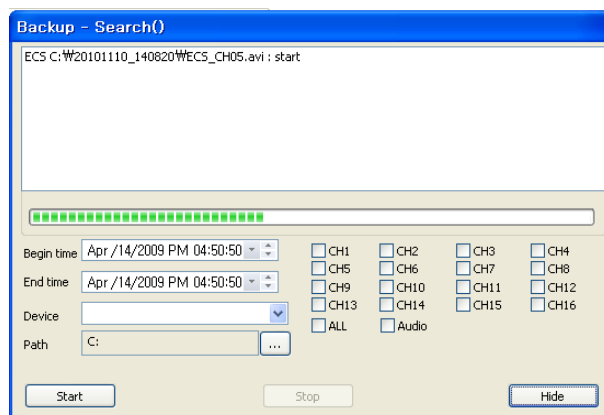
7-3-2. Manual backup

- Adjust begin & End time for backup
- Select device
- Select channels and audio
- Designate path for backup data
- Click Start



7-3-3. Backup status

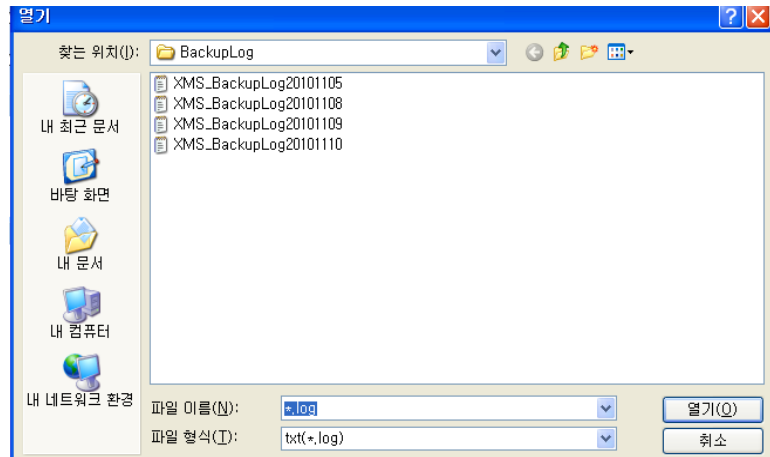
- If you execute backup, you can see the progress of backup.
- Hide the window to do other tasks.



7-3-4. Backup log

You can check logs that are generated during backup task.

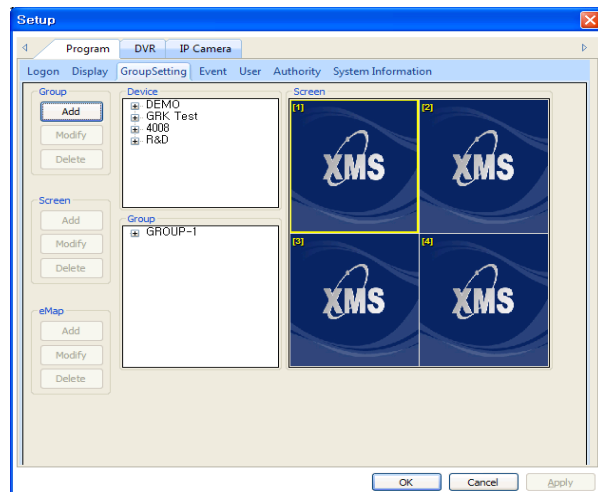
Logs are located in text file
Each backup task generates
1 log text file.



7-3-5. Screen Mode – select screen mode or access to screen mode editor

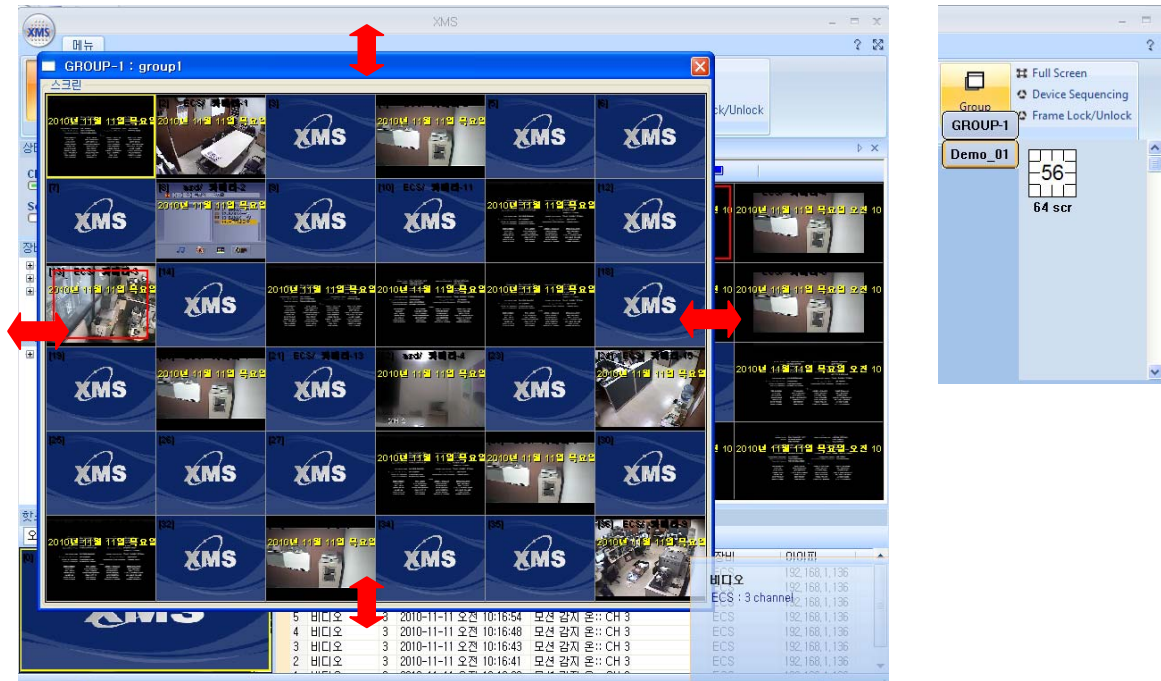
7-4. Group Setting

Short cut to group setting
: SETUP → Program → Group setting
You can register or modify group.
You can register or modify screen
You can register or modify map



7-5. Group Spot

Click Group spot in Short Cut. You can see registered group list. Select group that you want to monitor. Group spot window will pop up as below,



Group Spot window will pop up in the middle of main screen but it can be moved anywhere even to another monitor (if you are using multiple monitors). The total frame size of Group Spot is also adjustable.

8. Unique features of XMS

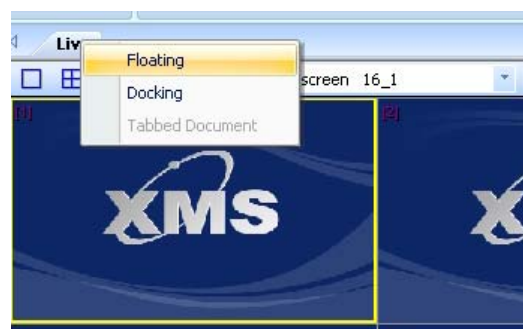
XMS has some user-programmable features for professional uses.

8-1. Floating

XMS was designed to support multi tasking in software. It can perform various tasks simultaneously. Each function in MENU can be floated for multi tasking.

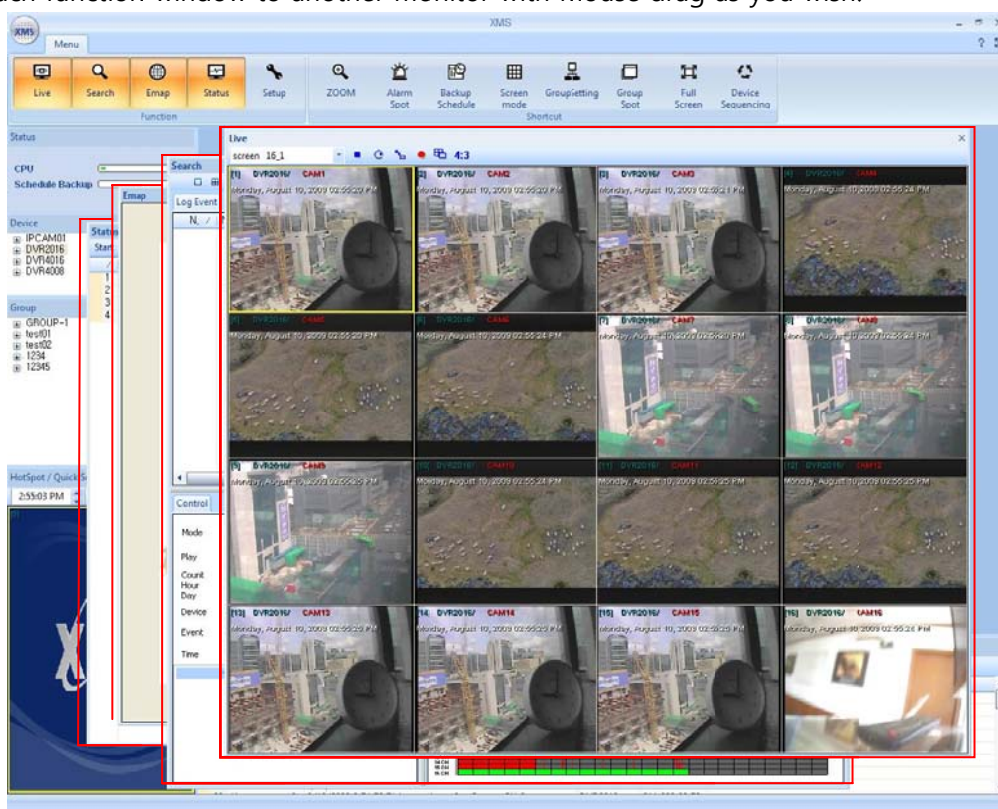
Click mouse right button on name of each function as seen in the picture.

Select Floating then the LIVE window will float on XMS GUI.



<Example of floating 1>

Each function window can be moved freely and if your PC supports multiple monitors, you can move each function window to another monitor with mouse drag as you wish.



<Example of Floating 2>



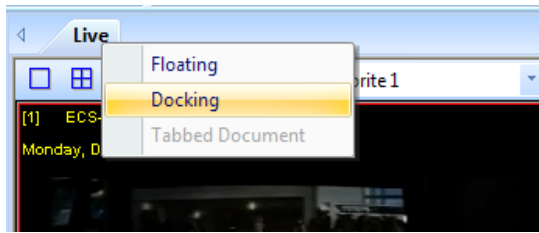
Search

Live

E-Map

Multiple monitors (Multi tasking) can be supported as many as PC can support.

8-2. Docking



Using Docking, you can make your own screen arrangements.

Click mouse right button on name of each function as seen in the picture.

Select Docking then the function window will be docked on XMS GUI.

